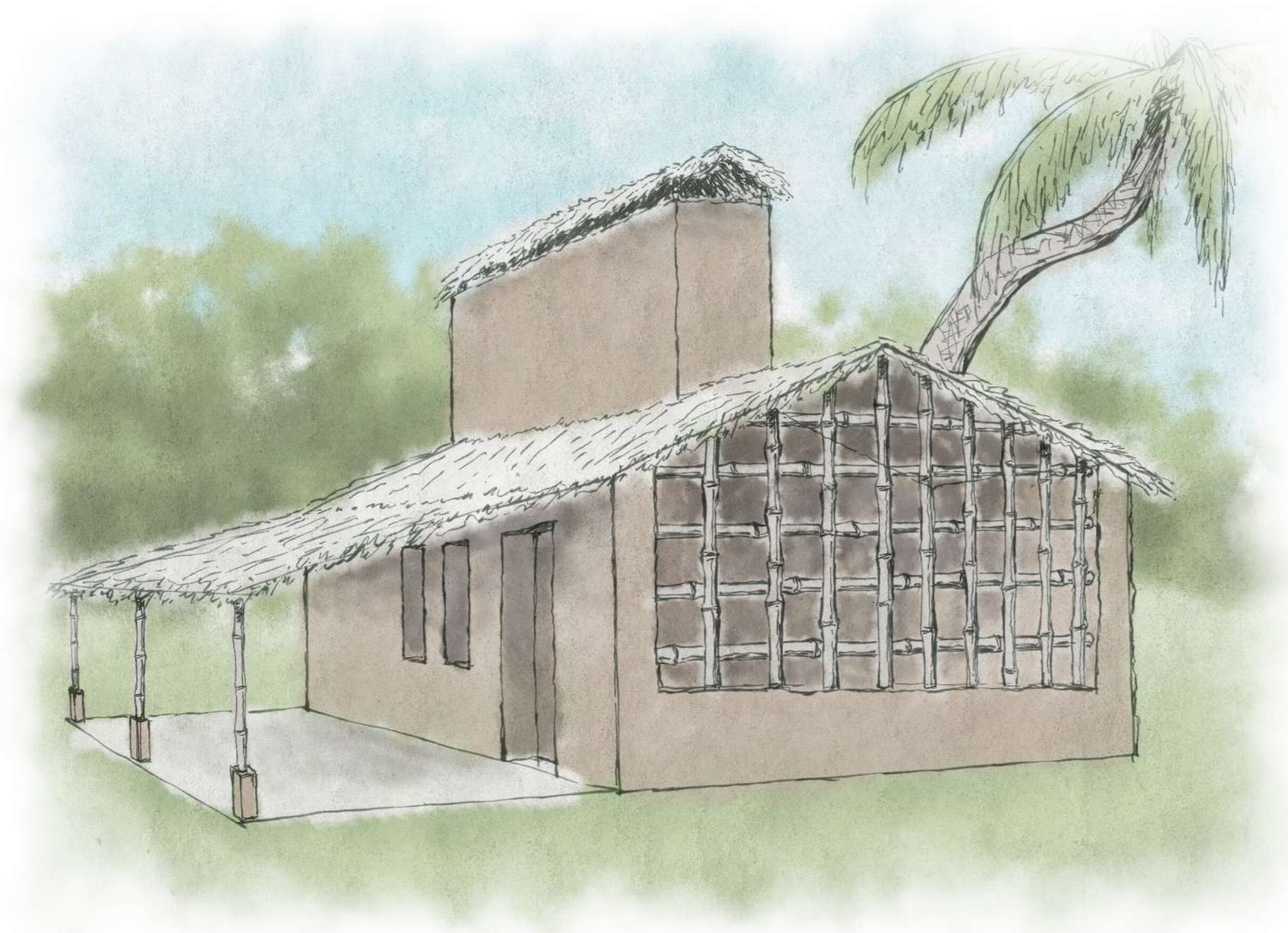


# FERIENHAUS AM PALAWAN

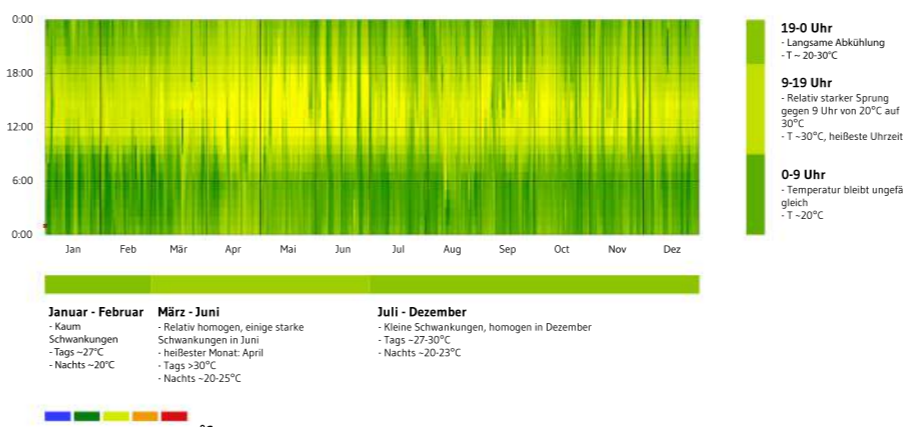
Alexey Erk 6021967 | Prof. Anja Willmann

EDDA WS 2019/20 | Jade Hochschule Oldenburg

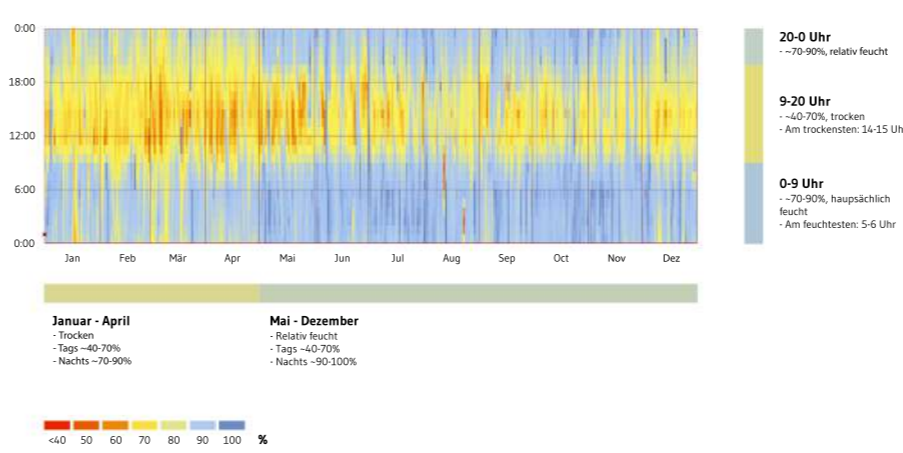


## KLIMAANALYSE

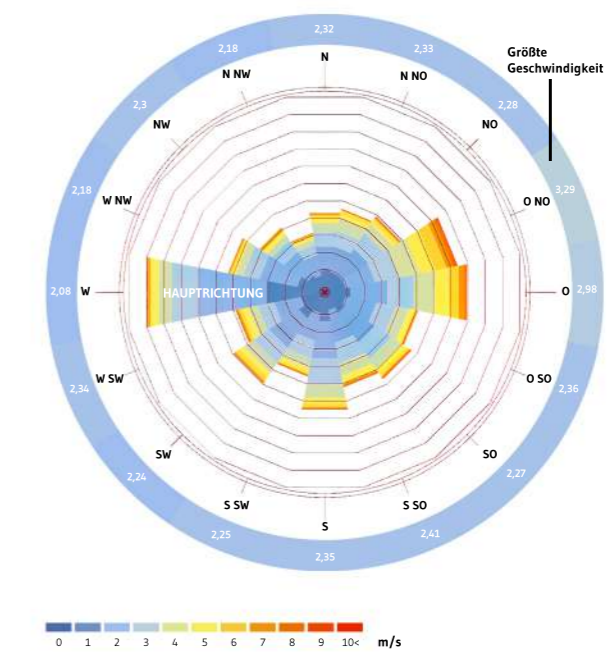
### | Lufttemperatur



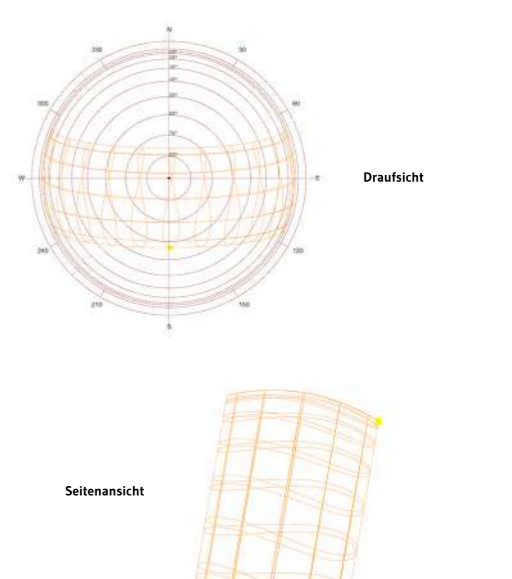
### | Relative Feuchtigkeit



### | Wind

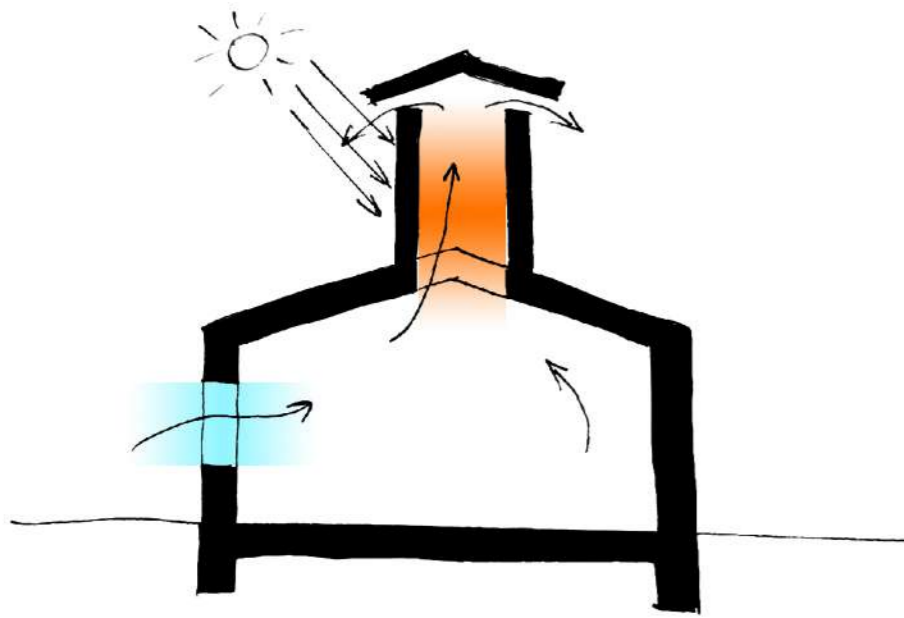


### | Sonnenverlauf

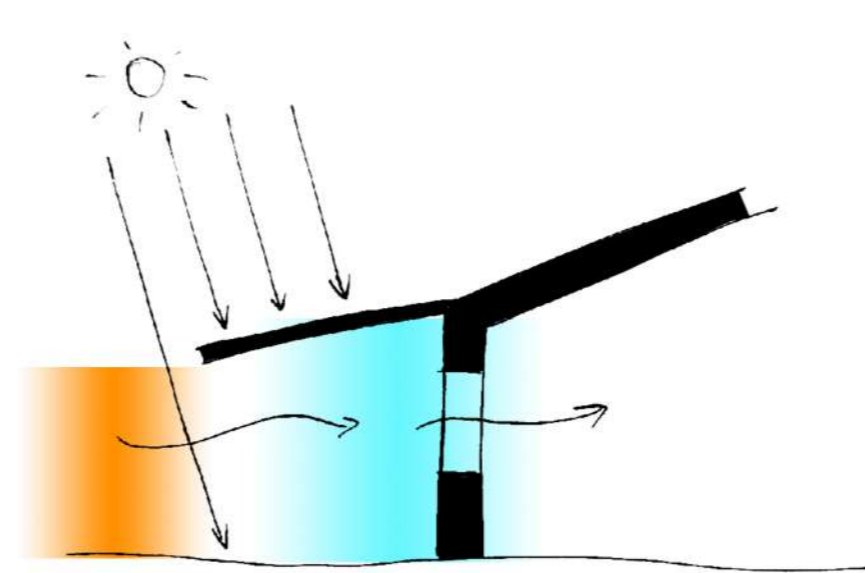


## PASSIVE STRATEGIEN

### | Kaminlüftung

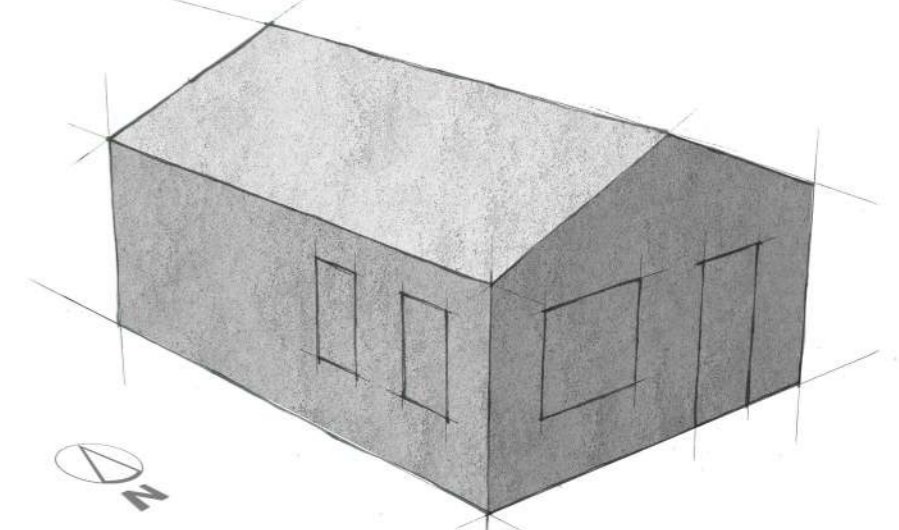


### | Pufferzonen

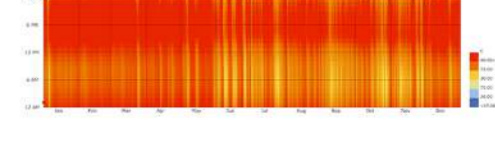


## ENTWURFSPROZESS

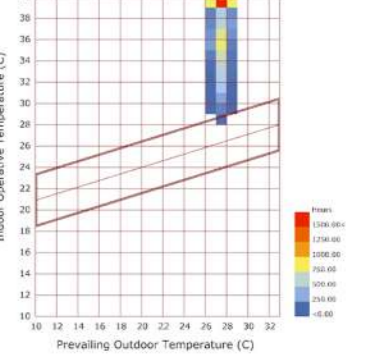
### | Ausgangsform



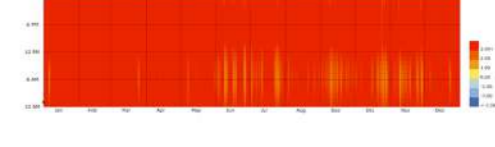
#### | Innentemperatur



#### | Adaptive Comfort

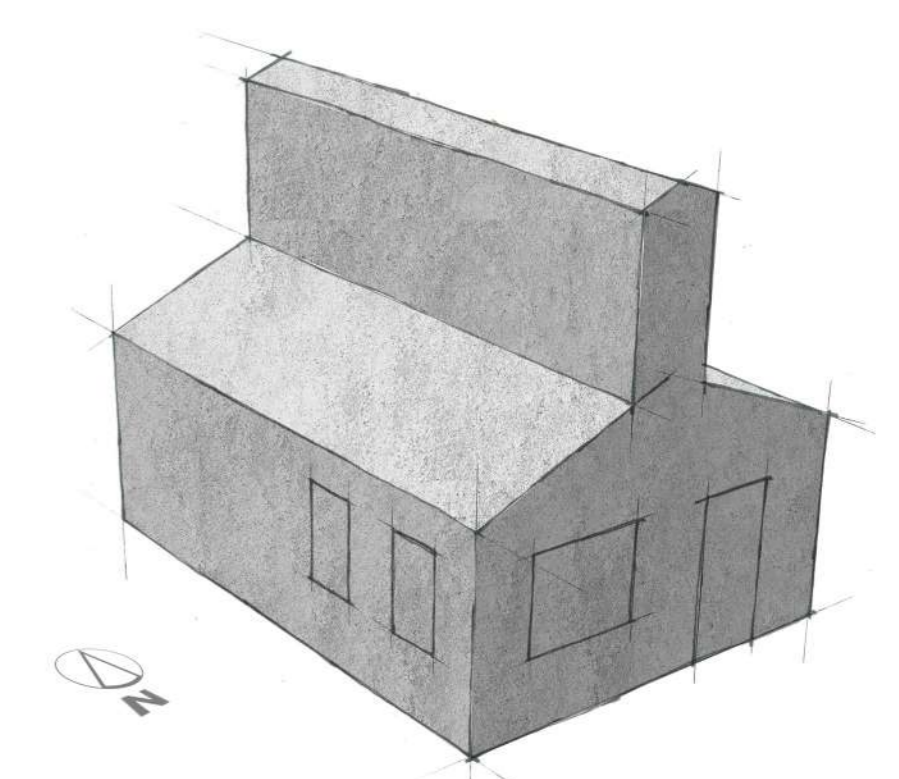


#### | Predicted Mean Vote

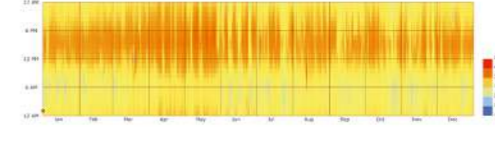


Percent of time comfortable: PMV: 0.0% AC: 0.17%

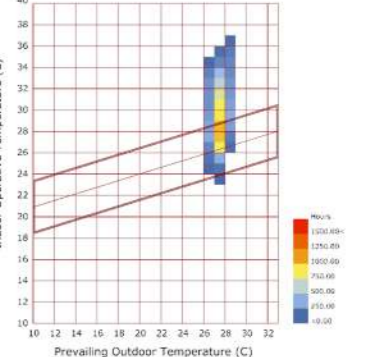
### | + Kaminlüftung



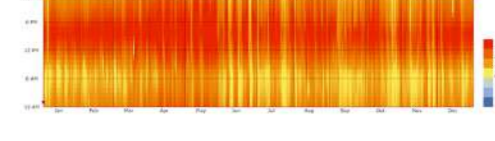
#### | Innentemperatur



#### | Adaptive Comfort

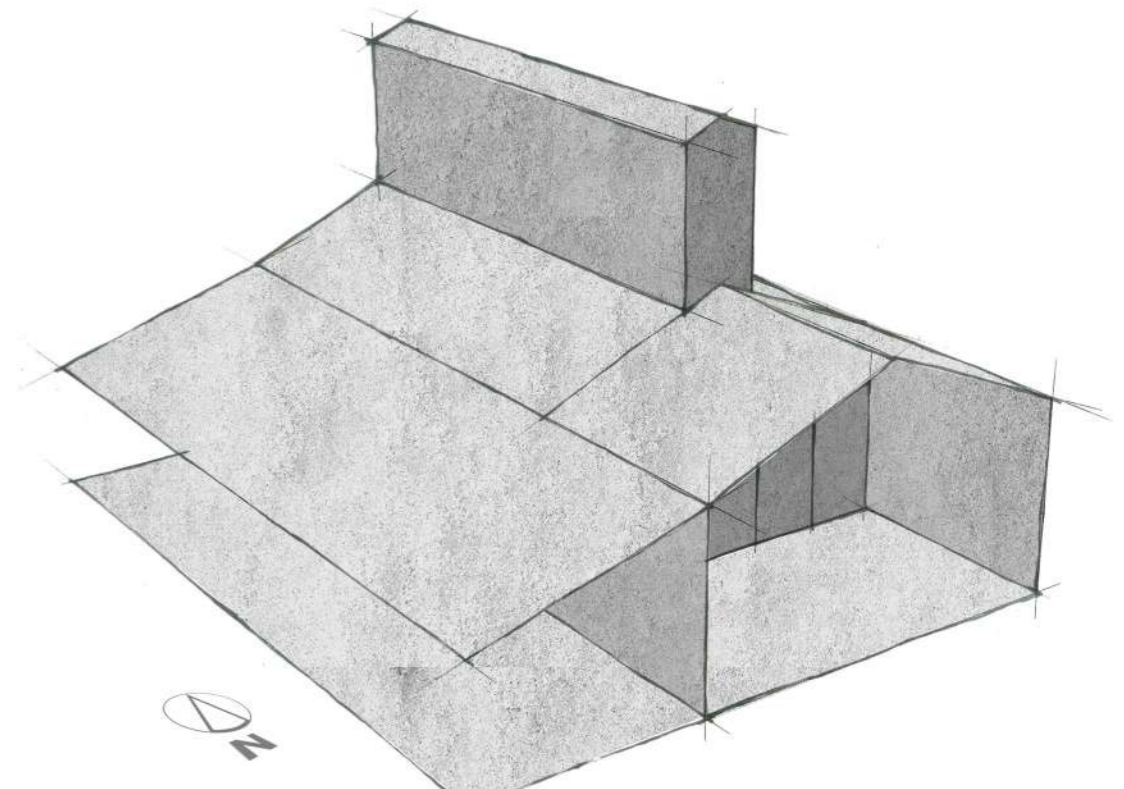


#### | Predicted Mean Vote

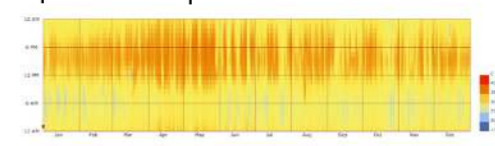


Percent of time comfortable: PMV: 6.50% AC: 40%

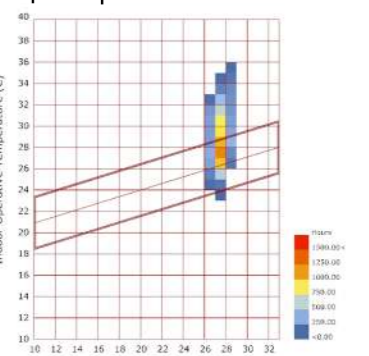
### | + Pufferzonen



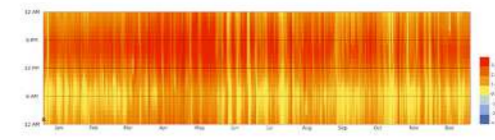
#### | Innentemperatur



#### | Adaptive Comfort



#### | Predicted Mean Vote



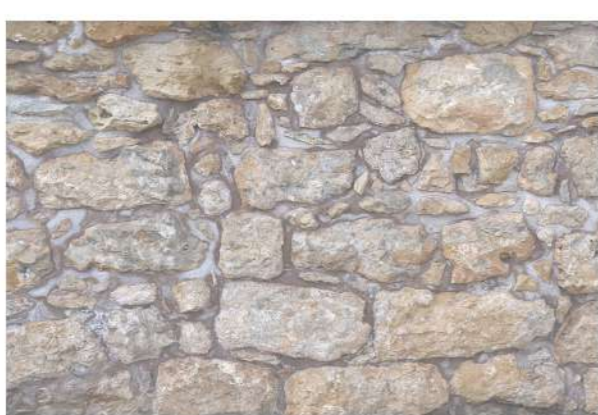
Percent of time comfortable: PMV: 10.9% AC: 50.21%

## ENTWURF

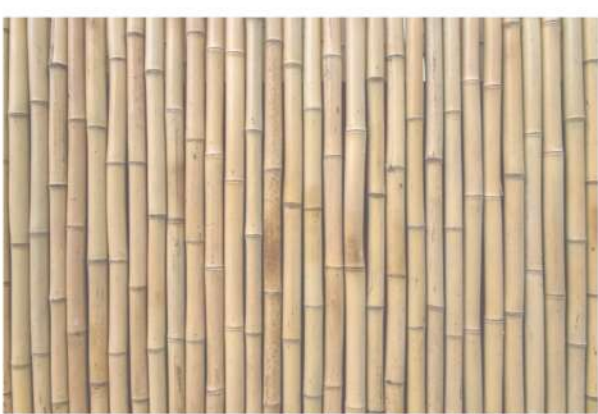
### | Materialien



Wände | Lehm



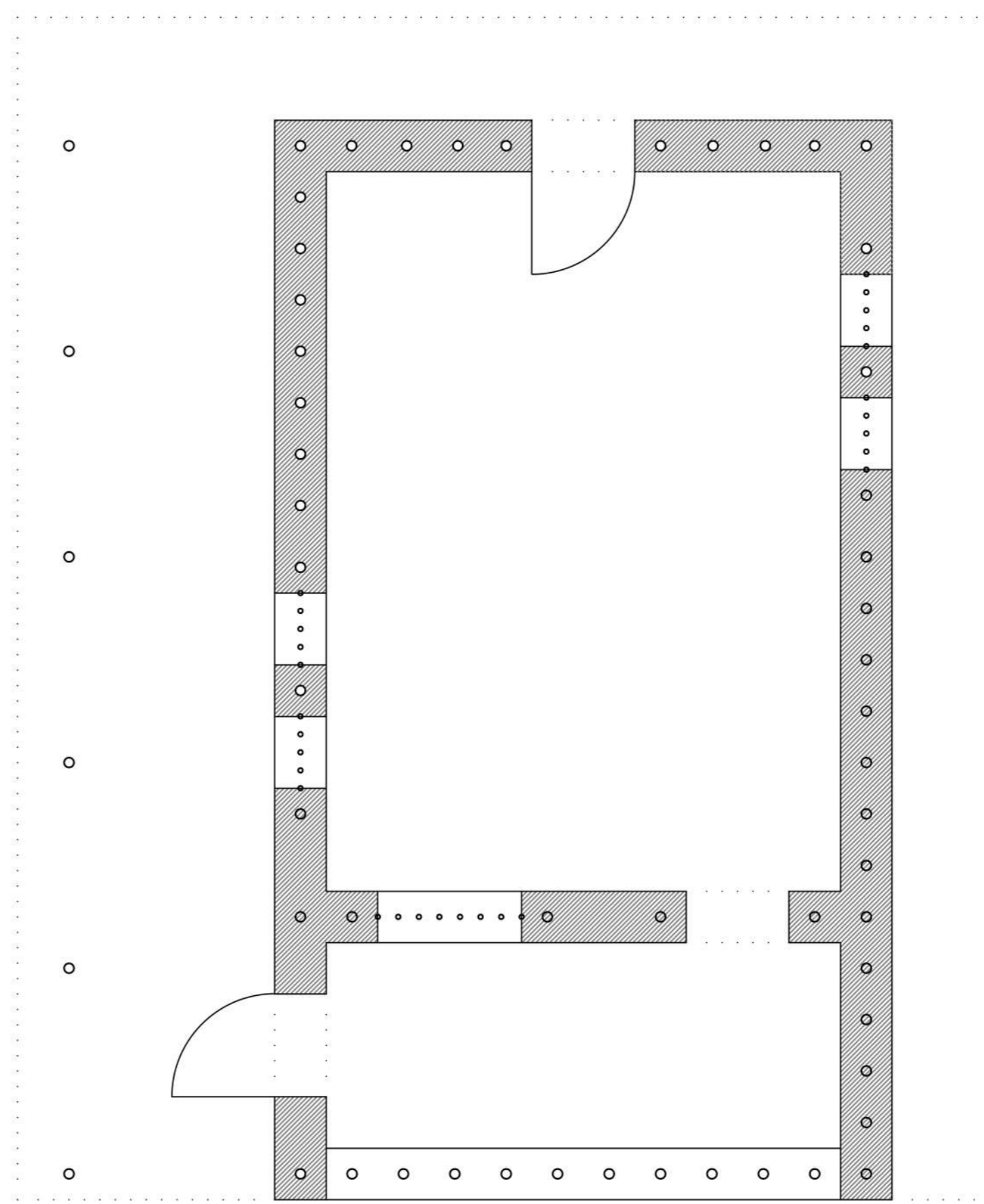
Boden/Fundament | Bruchstein



Unterkonstruktion | Bambus



Dach | Silberhaargras



Grundriss M 1:50

Schnitt M 1:50

